



uk connection

Madrid

Destination Guide

Address: 1 Jubilee Street, Brighton, East Sussex, BN1 1GE
Telephone: 01273 810740 Fax: 01273 693148 Email: info@ukconnection.co.uk

CONTENTS

Getting Into The City03

Hotel Choice04

Art & Design05

Business Studies & Economics .06

History / Geography.....06

Hospitality & Catering.....07

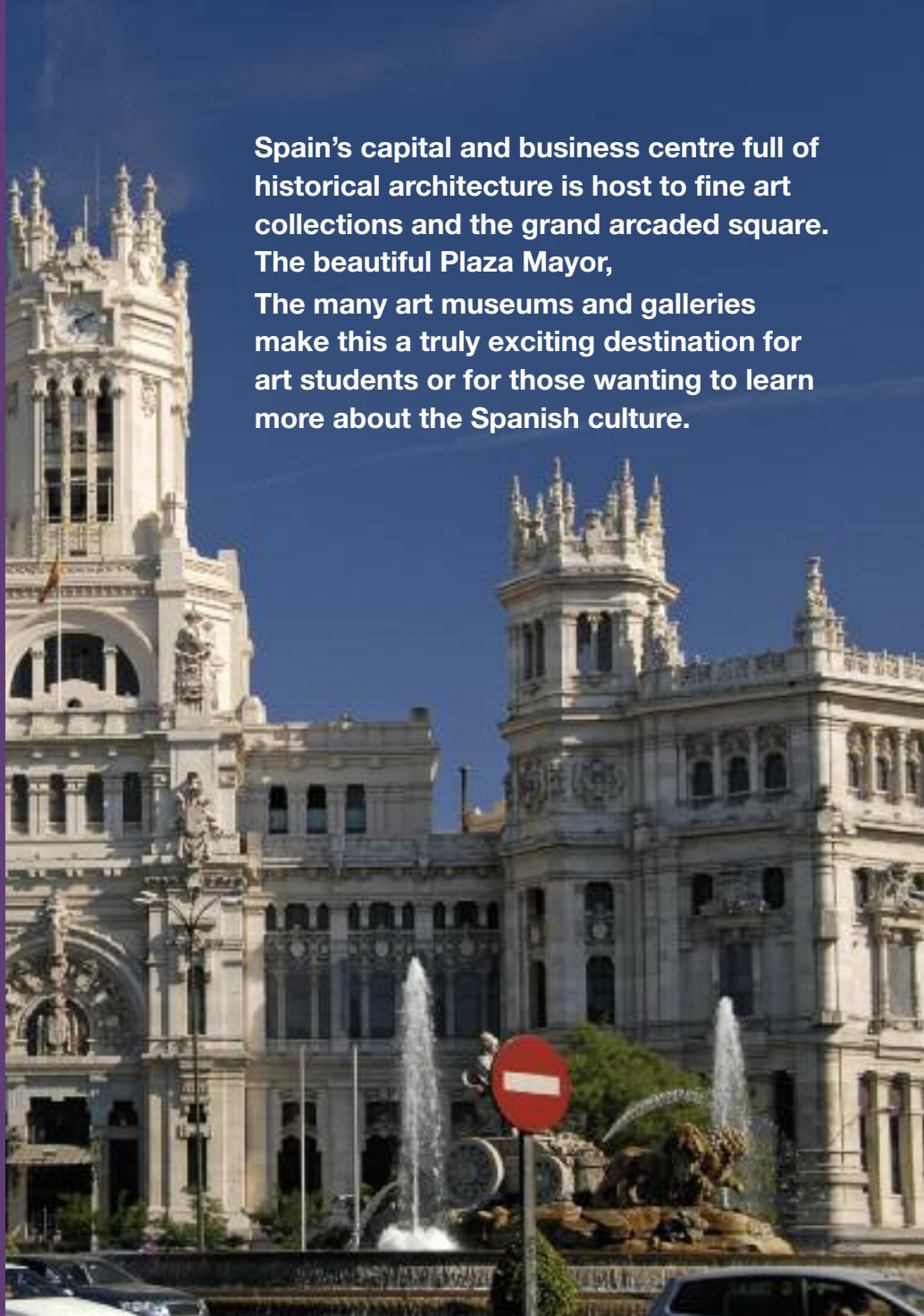
Sightseeing Tours07

Additional Visits07

Transportation 08

Restaurants 08

Spain's capital and business centre full of historical architecture is host to fine art collections and the grand arcaded square. The beautiful Plaza Mayor, The many art museums and galleries make this a truly exciting destination for art students or for those wanting to learn more about the Spanish culture.



General Information

o **Language:** Spanish

o **GMT:** + 1 hour

o **Flight Timings:**

Flight Timings:

London - Madrid 2 1/4 - 2 1/4 hrs

Madrid - London 2 1/2 - 2 3/4 hrs

o **Weather Link:**

<http://news.bbc.co.uk/weather/forecast/43?&search=madrid&itemsPerPage=10®ion=world>

o **Electricity Voltage:** 220V

o **Drinking Age:** 18

Student Safety in the City

o **Keep your Passport & Insurance documents in the safe and keep copies with you in your bag / wallet.**

o **Only carry with you as much money as you will need for the day.**

o **Make use of the hotels safe facilities.**

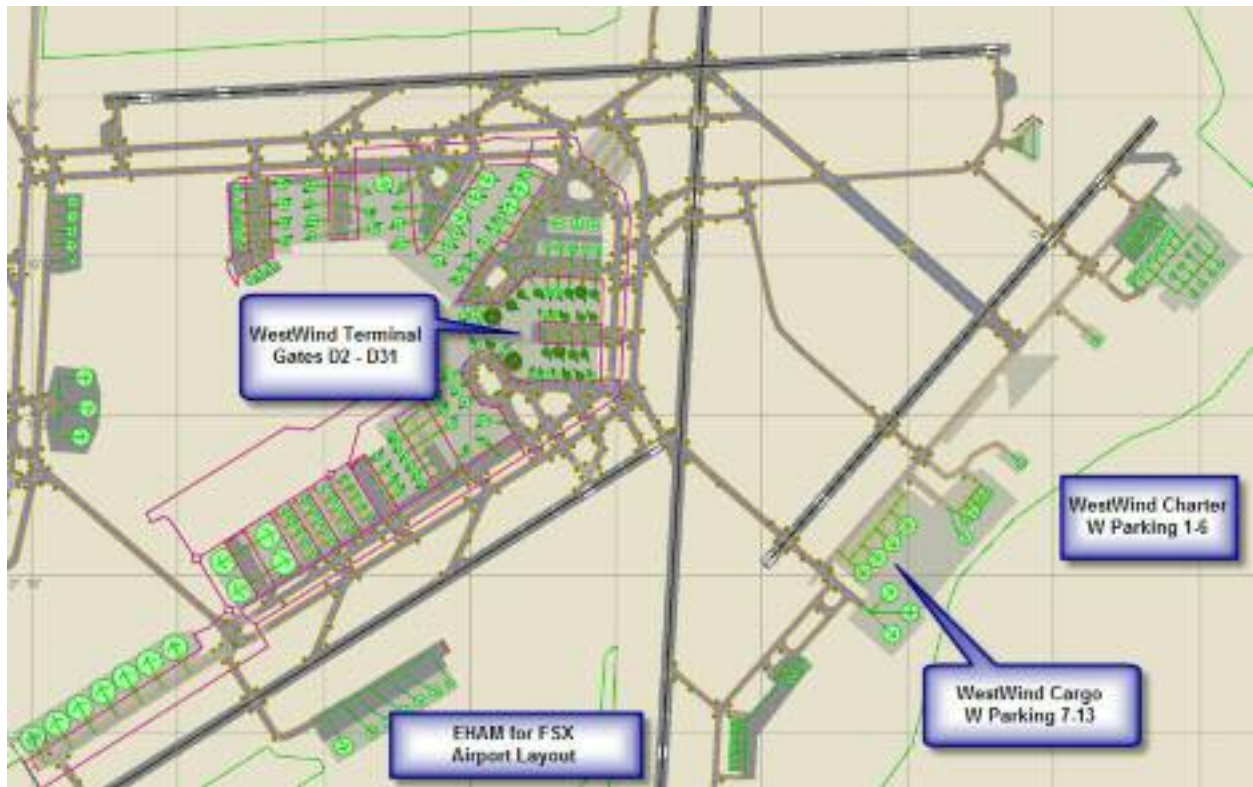
o **Travel around in small groups; don't go off on your own!**

o **As you would be in the UK, remain vigilant with your belongings.**

o **Respect your neighbours and keep noise in accommodation to a minimum after 22:30.**



Madrid Airport



Barcelona GETTING INTO THE CITY

You can make your way on public transport either by train, bus or taxi.

Train:

There are two Metro stations at the Airport at Terminal's 1 and 2. Trains are frequent and leave every 5-10 minutes between the hours of 6.00am to 2.00am. The most convenient is Line 8 that takes 12 minutes to get to the centre of Madrid (Nuevos Ministerios Metro station). The price of a single journey to or from the airport is 2 euros.



Bus:

There are regular bus services running from the airport. The 200 service travels daily from Barajas Airport to Avenida de América (Terminals 1, 2 and 3) and line 204 will take you from Terminal 4 to Avenida de América. Avenida de América is the final stop on this service and from here you will need to take the Metro for further destinations.

The bus leaves Terminal 2 approximately every 10 minutes from 6:00am - 11:30pm (15 - 20 minutes on weekends and holidays), 7am - 11:30pm. The price of a single bus journey costs 1 euro and large notes will not be accepted. You may also purchase a 10-trip "Metrobus" ticket in newspaper outlets and tobacconists in the airport terminal.

Taxi:

Taxi ranks are located outside the airport terminals. Do not accept offers from drivers standing inside the terminal as they are likely to be illegal. The average fair will vary between 20 - 25 euros for any central destinations depending on traffic. The following supplements may be applied to your basic fair such, 1.85 euros obligatory initial fare, 5 euros surcharge to/from airport, 2.50 euros surcharge to/from bus or train stations. There is no charge for suitcases or hand luggage. Always ask for a receipt at the end of your journey in case the fare comes into dispute.

Madrid HOTEL & HOSTEL choice

Hotel Mediodia

This 2* hotel is located close to the famous Golden Art Triangle and next to the botanical gardens. It is also close to Atocha train station.

- All Individual Beds
- All rooms have en-suite bathrooms
- Each room comes equip with TV, telephones, air-conditioning and heating
- 24 hour security
- Students will be accommodated in two and three bedded rooms
- Single rooms available for staff upon request
- Bed & Breakfast accommodation
- Bar & TV lounge
- Cafe
- Safety deposit box at reception
- Free Wi Fi connection in the hotel
- Convenient location close to Atocha train station allowing quick and easy access to other big cities outside of Madrid.



Francisco Hotel

This 3* hotel is ideally situated near all the main attractions such as Puerta del Sol, the Mayor Square and the Royal Palace. Many museums and monuments are located close by.

- All individual Beds
- All rooms have en-suite bathrooms
- 24 hour security
- Standard rooms come equip with television, telephone, safety deposit box, bath tub
- Superior rooms come with television, telephone, safety deposit box, shower and air conditioning
- Students will be accommodated in two and three bedded rooms
- Single rooms available for staff upon request
- Bed & Breakfast accommodation
- Restaurant
- Games room

- TV room
- Room service
- Wi Fi available in public areas



Hostal Nuria

This hostel is centrally located just three minutes walk from the popular shopping around Gran Vía and five minute walk from Puerta del Sol providing good transport links to main attractions.

- All individual Beds
- Communal bathrooms, en suite rooms available upon request.
- All rooms come equip with heating and telephone and television
- Air conditioning available in most rooms
- 24 hour security
- Students will be accommodated in two to four bedded rooms
- Single Rooms available for staff upon request
- Bed & Breakfast accommodation
- Safety deposit boxes available
- Restaurant & Cafeteria



Hostel Cantabrico

This hostel is located close to the Palacio Real and the Plaza Mayor and offers access to five theatres within its radius.

- All individual beds
- All rooms have en-suite bathrooms
- 24 hour security
- Each room comes equip with air conditioning, direct dial phone and television
- Student rooms are based on twin and triple rooms
- Single rooms available for staff upon request
- Bed & Breakfast accommodation



Madrid EXPLORE THE CITY



Temple of Debod

Art & Design

Place	Description
Museo Cerralbo	The 17th Marquis of Cerralbo toured Europe with his family and with their findings collected over 50,000 items. Visit the Cerralbo Museum for paintings, sculptures, ceramic ware, glassware, tapestries, furniture, coins, medals, drawings, prints, clocks, weapons, suits of armour and archaeological objects.
Museo de las Bellas Artes de San Fernando	The museum and gallery houses a fine art collection of paintings from the 15th to 20th century including artists such as Giovanni Bellini, Correggio, Rubens, Zurbarán, Murillo, Goya, and Juan Gris. The academy is also the headquarters of the Madrid Academy of Art.
Monasterio de las Descalzas Reales	The opening of the convent has provided a glimpse into what had long been a mysterious presence in central Madrid. A handful of barefoot nuns still live here, growing vegetables in the garden. The main attraction of the museum is the precious dowries brought in by aristocratic ladies who became nuns. Among them are reliquaries, one of which is said to contain pieces of the True Cross and another some of the bones of St. Sebastian.
Museo del Prado	The Prado Museum features over 10,000 pieces of art work including paintings, drawings, sculpture, prints, coins and medals. Features one of the world's finest collections of European art, from the 12th century to the early 19th century, based on the former Spanish Royal Collection.
Museo Nacional Centro de Arte Reina Sofía	The museum is mainly dedicated to Spanish art containing excellent collections of Spain's two greatest 20th century masters, Pablo Picasso and Salvador Dalí. You will see the most famous masterpiece in the museum, Picasso's great painting Guernica. The Reina Sofía also has fine collections of the works of many other artists.
Museo Thyssen-Bornemisza	The Thyssen-Bornemisza Museum contains art from the 13th – 20th century covering many major periods and artistic movements such as Renaissance, Mannerism, Baroque, Rococo, Romanticism and Pop Art.
National Museum of Decorative Arts	This Museum has 62 halls and rooms containing 30,000 different exhibits from as far back to the 15th and 16th Centuries. The museum includes predominantly furniture, ceramics and pieces of decorative art. The rich collections feature also Gothic carvings, elaborate four-poster beds, tapestries, festival crosses and even kitchen equipment from these times.
Palacio Real	The Royal Palace in Madrid is the official residency of the king of Spain for state ceremonial activities. It is the second biggest Palace in the world with 2,844 rooms in total. The Royal Palace also homes a great collection of classical Spanish art from such luminaries as Goya and Velazquez.



Outside Museo del Prado



Inside of Museo Cerralbo



Outside of Palacio Real



Banco de España



Bolsa de Madrid (stock exchange)



El Pais Newspaper



Senado

Place	Description
Banco de España	The Spanish Central Bank headquarters houses is unique as it is full of valuable art collections that includes the work of famous artists such as Salvador, Goya and many more. It is amazing both architecturally and artistically in the style of Vogue. <i>Calle de Alcalá 48, Madrid</i>
Bodegas Castejon Winery	This cellar was founded by Miguel Castejon Aguado. The wine is produced to high quality through the ageing process which is done through modern technology. The wine is stored in stainless still tanks and kept at a controlled temperature. You will see the facilities and the technology used to carry out the fermentation of wines and pneumatic pressing procedures. Opening times: Monday – Friday, visits at 10am, 1pm, 3:30pm and 5pm (no August visits available) <i>Bodegas Castejon, C / Ronda de catres, 29, 28500 Arganda del Rey, Madrid</i>
Bolsa de Madrid (Stock Exchange)	Madrid stock exchange offers a guided tour within the 19th Century Palacio de la Bolsa which also includes a visit to the exhibition 'The Stock Exchange of the New Millennium'. This exhibition will give you an insight to the stock Exchange characteristics since 1831 to date. Opening times: Monday – Friday 10am visit only lasting 1 hour <i>Bolsa de Madrid, Pl.de la Lealtad 1, 28014, Madrid</i>
CLESA Milk Factory	CLESA is now found all over Spain and has grown considerably now having to date five coordination centres in Pontevedra, León, Zaragoza, Barcelona and Madrid. The visit will cover the business structure of the company and learn how the importance of their production ensures the rapid, immediate, and efficient supply of its products to all corners of the country. Opening times: Monday – Friday 10am visit only lasting 1 hour <i>Avda. Cardenal Herrera Oria, 67. 28034. Madrid</i>
Coca Cola Factory	Take a visit to Madrid's Coca Cola factory for an insight of a business mass producing to a world wide scale. You will visit different parts of the factory to see the processing and procedures that takes place. Opening times: Monday – Friday, visits at 9:30am, 10:30am, 11:30am and 12:30am <i>Casbega, C/sauce, 20, Poligone Industrial Mino del Remedio, 28942, Fuenlabrada, Madrid</i>
Danone Factory	Danone is a French enterprise with factories worldwide. You can visit areas of the factory for an insight of their process and production in milk products and yoghurt. Opening times: Monday –Friday 10am to 12pm <i>Danone, Avenida Industria 20, 28760 Tres Cantos , Madrid</i>
El Corte Ingles - Department Store	El Corte Inglés is a renowned quality department store and is located in central Madrid near Puerta del Sol. It sells everything from Spanish and international fashion and sportswear to perfumes, make-up and electronics. Opening hours: Mon-Fri 10am-10pm; Sat-Sun 11am-9pm
El Pais Newspaper	El Pais is important to Spanish society as it shows the history and development of Newspaper to date and shows how it now also represents Catalan society. Visit all departments such as the designing and the printing of the newspaper. Opening times: Monday – Friday 10am and 11am visits only. <i>Diario El Pais S.L, miguel yuste 40, 28037, Madrid</i>

History / Geography

Place	Description
The Parliament	Visit the parliament which plays a central role in the every day lives of civilians living in the Country. Learn the Parliaments history and how it works and discuss political representatives and the actions of the nation's government.
Congreso de los Diputados	This is a visit to one of Spain's chambers where the politicians have meetings to discuss Spanish Politics and matters. Opening times: visits upon request <i>congresso de los Diputados, C / Floridablanca s/n, 28071, Madrid</i>
Senado	The tour will include a viewing of the Senate Chamber where matters of National and International interest are discussed and resolved. The group will also visit the oldest part of the building where the debates were originally held. And finally, a visit to the Senate Library, a beautifully decorated room with lots of famous 'old masters'. Opening times: Monday - Friday 10am – 6pm <i>Plaza Marina Española 8, 28013 Madrid</i>



Hospitality & Catering

Place	Description
Hotel visit in Madrid's centre	Take a tour of a 4* or 5* hotel. You will visit the main department areas to discuss how the running and communication of each department is important to guarantee a successfully run hotel.

Sightseeing Tour

Place	Description
Half day sightseeing tour	Take a 4 hour guided sightseeing tour of Madrid.
Full day sightseeing tour	Take a 8 hour guided sightseeing tour of Madrid.

Additional Visits

Place	Description
Faunia Wildlife Park Madrid	Just a few kilometres from the centre of Madrid, Faunia Wildlife Park is unique in Europe. This is a bio-park, which covers 14,000 of square meters, replicates different ecosystems in various different sectors: the Mediterranean, tropical jungle, aviary, the Artic and the Antarctic. Opening times: Upon request Faunia Wildlife Park, Avenida de las Comunidades 28, 28032 Vicalvaro. Madrid <i>Faunia Wildlife Park, Avenida de las Comunidades 28, 28032 Vicalvaro. Madrid</i>



The Royal Palace of Madrid

Transportation

Place	Description
Metrobus Ticket	This can be purchased at a newspaper outlet, tobacconists or Metro stations. The ticket is valid for 10 journeys and is valid for bus and metro journeys. Supplements may be applied for any journeys to and from the airport.
Madrid travel pass	This transport ticket is valid for all of Madrid's Metro and Bus services within the city including local suburban trains and inner-city trains. The pass is available for 1 - 7 days travel and can be purchased for Zones A or T. We recommend a pass for Zone A only as it covers all locations within Madrid's city centre including the airport. It is unlikely that you require Zone T tickets, unless you need to travel outside the city of Madrid itself. Your travel card will be activated automatically the first time you use it and will remain valid until 5am on the day after the expiry date (printed on the back), allowing you to use the late nocturnal transport services as well.



Restaurants

Place	Description
Restaurante El Tres	This restaurant offers a wide variety of choices on the menu to cater for all tastes! A good location and accessible on foot or by metro. <i>Address: Calle Doctor Drumen 3, Madrid.</i>
Restaurante El Museo Del Jamon	This is a popular chain of restaurants in Madrid and translates to 'Museum of Ham'. One of the most popular and obvious selections on the menu is ham and is offered in many different varieties from pasta, to roast, to simple sandwiches. <i>Address: Calle de Atocha 54, Madrid.</i>